

## YGXF Series Filter

Multi-Cartridge Self-Cleaning · Low Pressure Loss · Continuous Filtration

Multi-cartridge automatic backwash filter for large-flow water systems. Monitors pressure differentials to trigger individual or group cleaning automatically, achieving 3500m<sup>3</sup>/h capacity with 20-3000µm accuracy and 16bar pressure. Stainless steel cartridges eliminate consumables while maintaining low pressure loss.



### Core Challenges

- Process interruption during backwash
- High energy consumption in precision filtration
- Inefficient cleaning with excessive water use
- Large footprint for high-flow requirements

### Applications

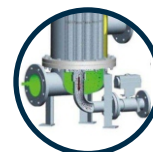
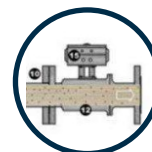
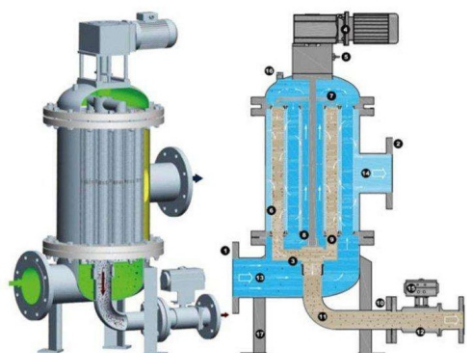
- Municipal water treatment and distribution
- Industrial cooling water systems
- District heating and cooling systems
- Seawater desalination pretreatment
- Landscape and agricultural water systems
- Mining and mineral processing water

### Key Features

- Continuous operation during backwash
- 30% lower pressure loss than standard designs
- 80-90% water saving in backwash process
- Fully automated control systems
- High-flow compact design reduces footprint

### Value

Reduces energy, water, and space requirements while maintaining continuous operation and filtration quality, providing efficient and economical solutions for high-flow water treatment.



## YGXF Series

## CUSTOM DESIGN AND MANUFACTURING AVAILABLE

Model of Filter	Inlet/Outlet	Housing size mm	Drain Pipe Diameter	Filtration Accuracy $\mu$ mm	Motor Power kw	Flow Rate $m^3/h$
300	DN150	Ø325x2200	DN25	$\geq 50$	0.37	200
400	DN200	Ø426x2300	DN25	$\geq 100$	0.37	300
500	DN250	Ø500x2350	DN40	$\geq 100$	0.37	450
600	DN300	Ø600x2500	DN40	$\geq 200$	0.75	700
700	DN350	Ø700x2600	DN50	$\geq 300$	0.75	900
800	DN400	Ø800x2800	DN50	$\geq 300$	0.75	1200
900	DN450	Ø900x3000	DN65	$\geq 500$	0.75	1500
1000	DN500	Ø1000x3200	DN65	$\geq 1000$	1.5	2000
1100	DN600	Ø1100x3350	DN80	$\geq 1000$	1.5	2500
1200	DN700	Ø1200x3500	DN80	$\geq 1000$	1.5	3500